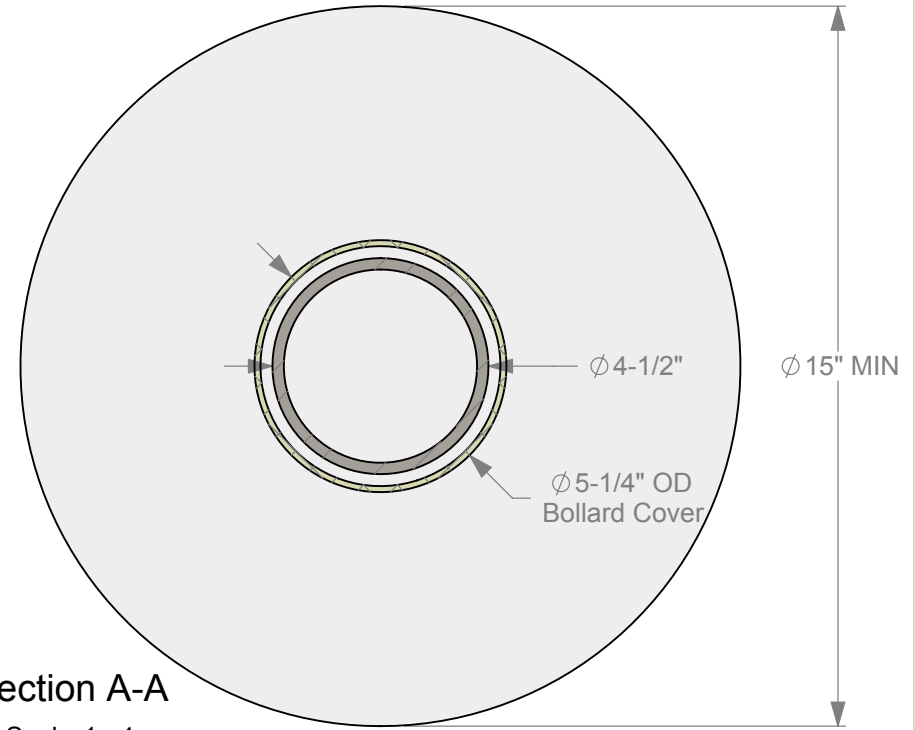
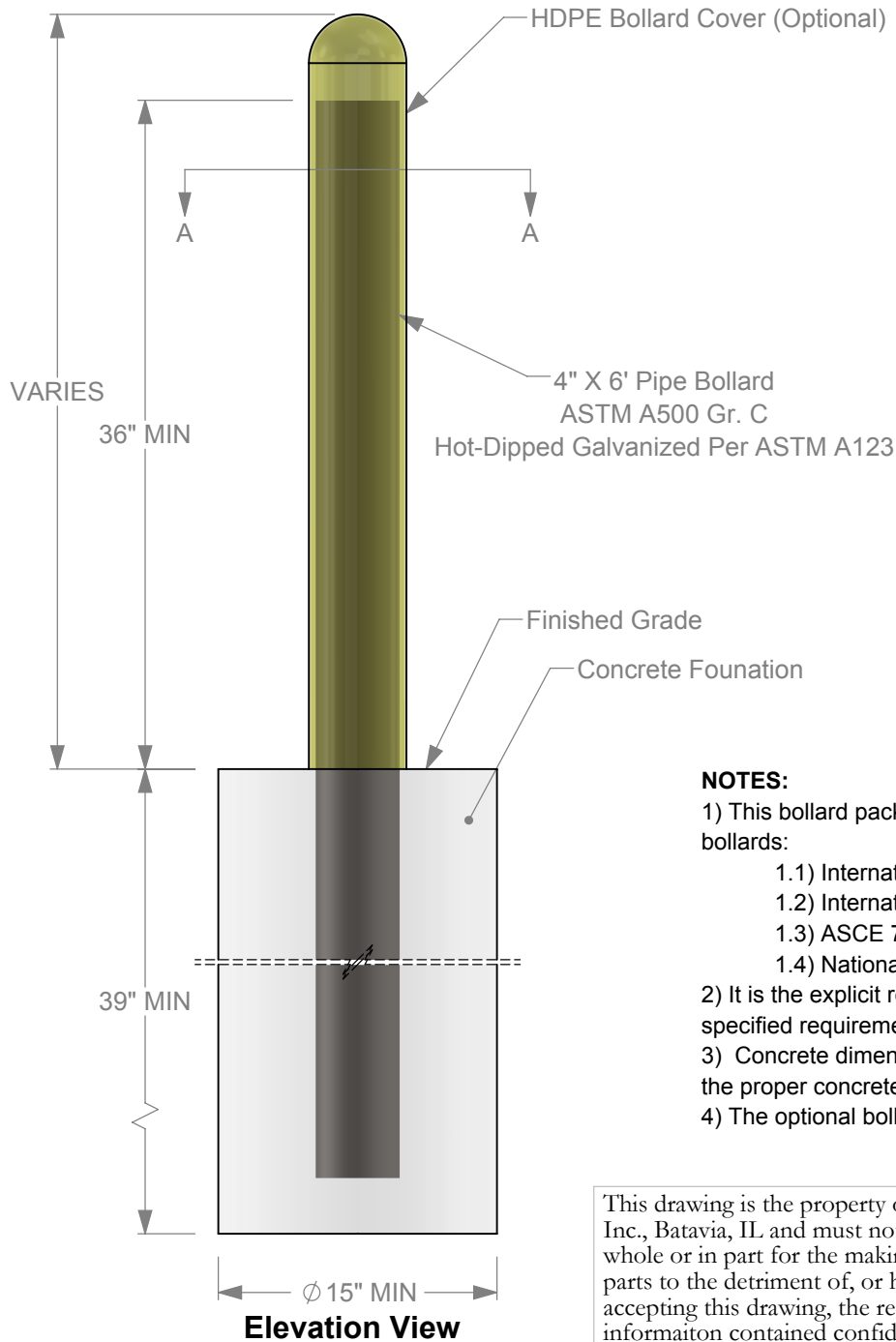


International Fire/Building Code Bollard



Section A-A
Scale 1 : 4

NOTES:

- 1) This bollard package is explicitly intended to meet the following specifications (among others) for guard bollards:
 - 1.1 International Building Code (IBC) 2018
 - 1.2 International Fire Code (IFC) 2018
 - 1.3 ASCE 7-16 Minimum Design Loads and Associated Criteria for Buildings and Other Structures
 - 1.4 National Fire Protection Association (NFPA) 1 2018
- 2) It is the explicit responsibility of the end user to verify that this bollard package does in-fact meet the specified requirements for a given project.
- 3) Concrete dimensions shown are for reference only. It is the explicit responsibility of the end user to specify the proper concrete dimensions and compressive strength to verify to meet all project requirements.
- 4) The optional bollard cover can be field cut to a custom height.

This drawing is the property of Bollard Warehouse, Inc., Batavia, IL and must not be duplicated or used in whole or in part for the making of drawings, prints, or parts to the detriment of, or harm to, the owner. In accepting this drawing, the recipient agrees to keep the information contained confidential.

Bollard Warehouse, Inc.
 PO Box 298, Batavia, IL 60510
 sales@bollardwarehouse.com
 (877) 727-7347 Off. / (800) 814-7194 Fax

BOLLARD
 WAREHOUSE

International Fire/Building Code Bollard

2019-04-05

Drawn by MSB

Scale 1:10

Sheet 1 of 1 IFC/IBC Bollard